

FBMG Help Desk

Question of the Week

I would like a fishpond in my backyard. What steps will help in my success?



Lets take a look...



An Ecosystem will emerge in your yard!

The reward can be amazing!

With a fishpond a flurry of activity will spring up. Dragonflies, butterflies, bees and other insects will increase in number. Toad, frog, lizard, snake and turtle populations may increase as they find their way to your pond. Songbirds may frequent more often as well. You may even see a heron or a hawk!



Some of these will come for the water
some will come for the fish, so make
sure to give your fish plenty of hiding
places.



*Consider getting a journal and keeping a record of your visitors.
You may want to explore becoming a certified wildlife habitat
<https://www.nwf.org/Garden-For-Wildlife/Certify.aspx>*



The possibilities are varied.



*Your pond can be as simple or as elaborate
as you choose to make it.*

The complexity and size of your pond should be based on the amount of time and space you have to contribute to it.

Make a plan and consider:

- Do you want a premade form, a container or do you want a liner?
- How large do you want your pond?
- What plantings would you like in it and what plantings would you like around it?
- Do you want to start with Koi or will you go with the feeder fish from the pet store?
- Will your pond be ground level, or will it be in a raised area?
- Do you have an electrical source for pumps, filters and lights or will you be using solar?
- Make certain that your pond has levels for shallow plantings and deep-water plantings.
- Make sure that your pond is deep enough to provide protection for you fish from predators and inclement weather.
- Is there a water source nearby?



Pick a location where you can enjoy the view! Audition locations by sitting in a chair and using your imagination.



There is Routine Maintenance.

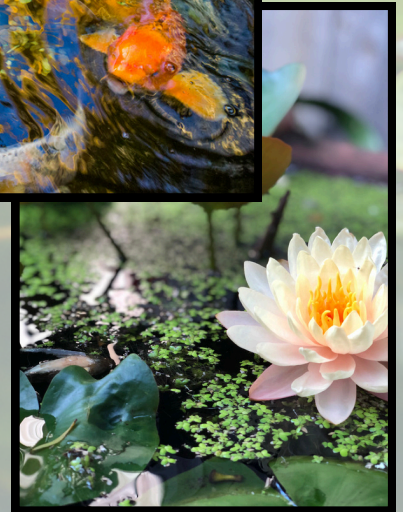


*Tasks to be completed daily and some
with the seasons.*

While you will need to spend some time to maintain it, the reward is amazing!

A list of To Do's

- feed the fish
- check the water level and quality
- separate and thin overgrown plants
- remove trash and debris
- make sure that there is a way to keep the pond from freezing over in the winter as it can cause a lack of oxygen
- clean in the spring
- change the water
- clean the water filter, pump and fountains



ENJOY!!!

Obtain Plants Locally



Make sure to get your plants from a reputable local source.

There are some plants which can become invasive and damage our waterways. Be careful and protect our resources. Check the approved or restricted plant lists.

<https://aggie-horticulture.tamu.edu/earthkind/landscape/water-gardening/plant-life-water-gardens/>

Consideration for choosing plantings

- there are free floating, leaf floating, bog and submerged plants, each serves a purpose decide how many of each you would want
- planting around the pond are wonderful as they provide food and shelter pond life critters as well as shade for the fish
- the sun exposure of your pond site - full or part sun, full or part shade - will help determine your choice of plantings
- consider plants that attract the wildlife you are interested in



HAVE FUN AND ENJOY!!!

*Do you have questions
about your home
landscape and plants?*

*Contact the Fort Bend
Master Gardener Help Desk*

*Email:
FortBendmg@ag.tamu.edu*

*Phone:
281-341-7068*

*The Help Desk is manned
Monday thru Friday,
9am-Noon*



- 1. Pond Care. The Royal Horticultural Society.*
- 2. Pond Algae: It's Not All Bad. Penn State Extension.
<https://aggie-horticulture.tamu.edu/earthkind/landscape/water-gardening/site-selection-water-gardens/>
<https://site.extension.uga.edu/camdenanr/2021/07/pond-health-and-fish-kills-in-residential-ponds/>
<https://aggie-horticulture.tamu.edu/earthkind/landscape/water-gardening/plant-life-water-gardens/>*
- 3. Algaecides. U.S. Army Corps of Engineers.
Choosing pond plants / RHS Gardening
<https://www.thespruce.com/water-garden-ideas-8644565>
Pond Maintenance: How to Keep Your Pond in Great Shape ([thespruce.com](https://www.thespruce.com)).
The Wildlife Garden - Create a Garden Pond for Wildlife, OSU Extension
Woodland Ponds - A Field Guide, OSU Extension
<https://aggie-horticulture.tamu.edu/earthkind/landscape/water-gardening/maintenance-water-gardens/>
Aquatic plants: planting / RHS Gardening
<https://aggie-horticulture.tamu.edu/earthkind/plant-selector/>*